

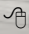
Miele

24" Whole Bean Coffee System

CVA 6401, CVA 6800



Shown: CVA 6800 over ESW 6214
Please note: This information is subject to change

 mieleusa.com
Specification Sheet TRS 09062019

24" Whole Bean Coffee System Plumbed

SPECIFICATIONS	
Overall Unit Dimensions - Excluding Fascia Dimension	21 ⁷ / ₁₆ " (545 mm) W x 17 ¹ / ₂ " (445 mm) H x 18 ¹ / ₈ " (496 mm) D
Overall Fascia Dimensions	23 ⁷ / ₁₆ " (595 mm) W x 17 ¹⁵ / ₁₆ " (455.5 mm) H x 1 ³ / ₁₆ " (22 mm) D
Door Depth When Open	23 ⁷ / ₁₆ " (594 mm)
Built-In	
Minimum Cabinet Opening Dimensions	22 ¹ / ₁₆ " (560 mm) W x 17 ¹¹ / ₁₆ " (450 mm) H x 21 ⁵ / ₈ " (550 mm) D
Minimum Base Support	62 lbs
Additional Cut-outs Required	Venting: 19 ¹¹ / ₁₆ " (500 mm) x 1 ⁹ / ₁₆ " (40 mm) or 31" in ² (200 cm ²)
Electrical	
Electrical Requirements	120V, 60Hz, 15A
Power Cord	Molded NEMA 5-15A plug, 6 ft (1.8 m)
Shipping	
Shipping Weight	66 lbs (29.94 kg)
Shipping Dimensions	23 ⁵ / ₈ " (600 mm) W x 22 ¹ / ₁₆ " (560 mm) H x 26" (660 mm) L
Support	
Call Miele	(800) 999-1360
Miele Website	www.mieleusa.com
20/20 Link	2020technologies.com



CVA 6401
Item 29640150USA



CVA 6401 BRWS
Item 29640110USA



CVA 6401 OBSW
Item 29640120USA

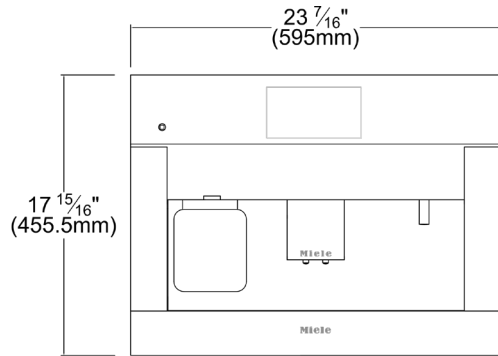


CVA 6800
Item 29680050USA

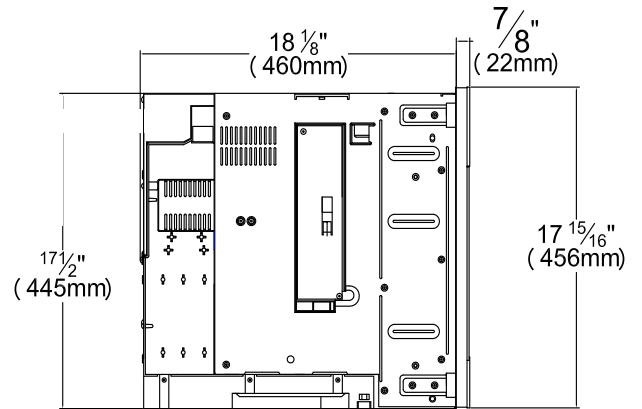
24" Whole Bean Coffee System Plumbed

INSTALLATION SPECIFICATIONS

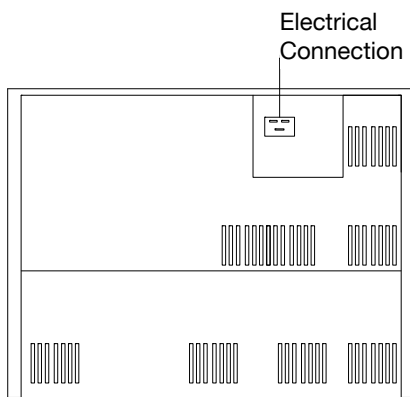
Front View



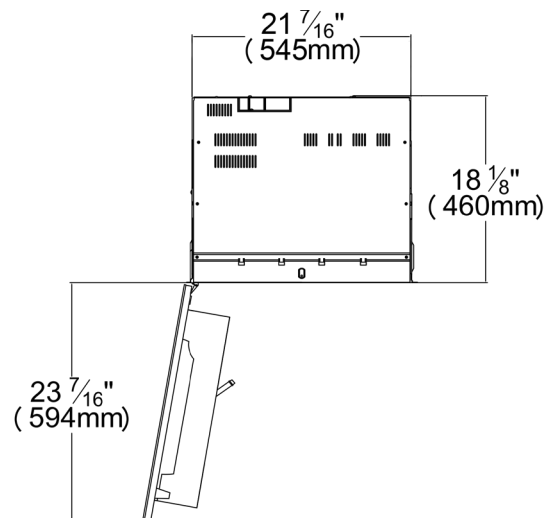
Side View



Rear View



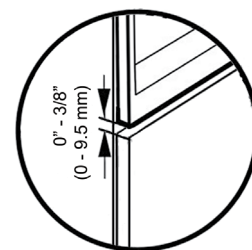
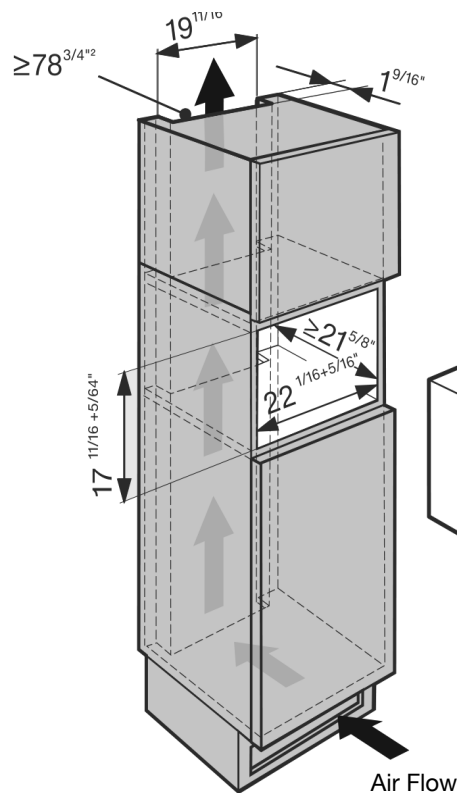
Top View, Door Open



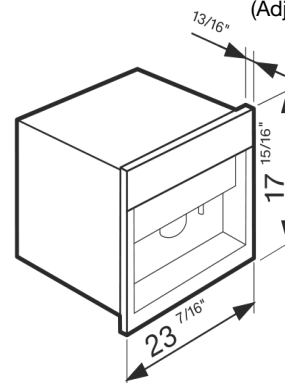
24" Whole Bean Coffee System
Plumbed

INSTALLATION SPECIFICATIONS

Solo Installation



Lower gap adjustment detail when solo installed.
(Adjusted by feet of CVA unit.)

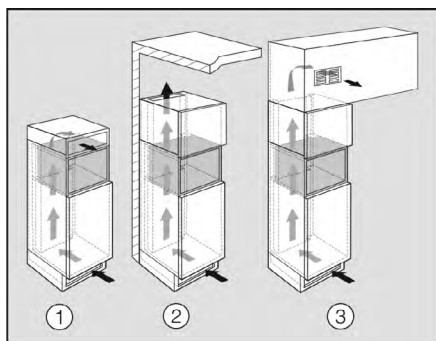


VENTILATION REQUIREMENTS

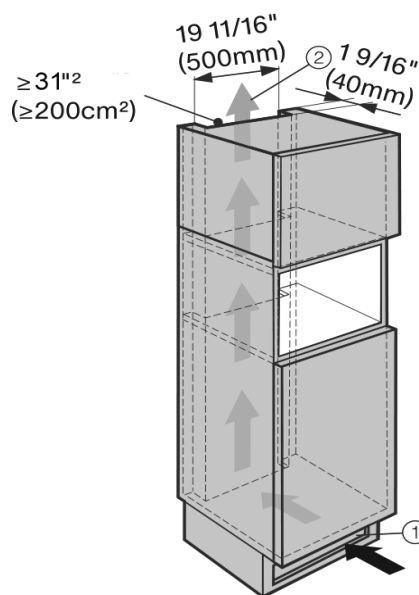
PLEASE NOTE:

Condensation water can damage the coffee system or surrounding cabinets. The specified ventilation cross-sections absolutely must be observed.

VENTILATION OPTIONS:



- ① Directly above the coffee system with a ventilation grille (free airflow of at least 31 square inches / 200 cm²)
- ② Between the surrounding cabinets and the ceiling
- ③ Through a suspended ceiling



Air intake ① occurs via the plinth at the bottom of the appliance and the air escapes at the top ② at the rear of the surrounding cabinets.

24" Whole Bean Coffee System Plumbed

INSTALLATION SPECIFICATIONS With Warming Drawer (ESW 6x14)

PLEASE NOTE: Condensation water can damage the coffee system or surrounding cabinets. The specified ventilation cross-sections absolutely must be observed.

